

INE-F904D / INE-F904DC Series

software update procedure



Update procedure

The firmware can be updated with only one USB device and requires three update phases. First, please download the “xxx_USB_Audio.zip” and follow the instructions. The INE-F904xx can be updated via USB connection (see connection diagram below). Before starting the update, please check following notes. The download file is compressed in zip format. The contents of the download need to be extracted to a freshly formatted USB device (FAT32). The update takes 10 to 15 minutes.

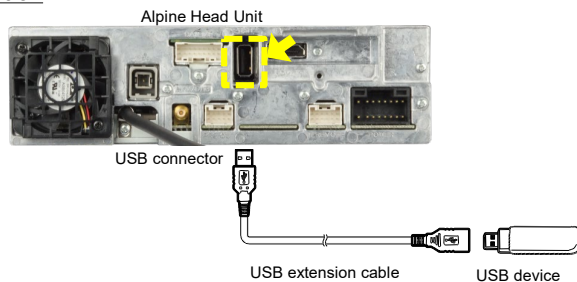
Update file contents / storage place (for each type of unit)

	Name	Größe
<ul style="list-style-type: none"> Schnellzugriff OneDrive Dieser PC ALPINE32GB (F:) <ul style="list-style-type: none"> NE00041A Netzwerk 	buprog.bin	1.536 KB
	imxapsw.img	56.697 KB
	imxapswupd.img	88 KB
	imxbl.img	230 KB
	imxdbt.img	52 KB
	imxdbtupd.img	52 KB
	imxgpsw.img	38.735 KB
	imxgpswupd.img	19.806 KB
	imxkern.img	3.007 KB
	imxkernupd.img	3.007 KB
	order.apn	1 KB
	orderupd.apn	1 KB
	updateAlpine.img	2 KB
	updnv.img	54.410 KB

Notes

- Do NOT use the compressed file for update, otherwise the Unit cannot recognize the files.
 - Do NOT change folder name and file names, otherwise the Unit cannot recognize the files.
 - Do NOT store the folder inside another folder.
 - Do NOT store any other folders/files on the USB device.
 - Do NOT remove the USB device while updating.
 - Do NOT update while driving.
 - Do NOT press any buttons while updating.
 - Do NOT turn off vehicle’s ignition or head unit’s power switch while updating.
- Modern vehicles will shut down the ignition (ACC) after some time if the engine is not running.
If you are not sure if this applies to your car, leave the engine idling while the update is in progress.

Connection

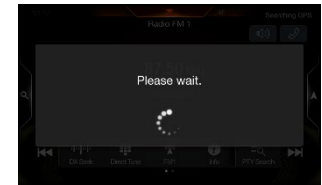
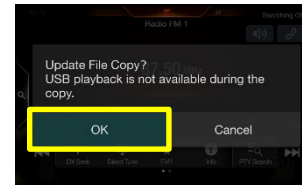


Install update software (phase 1)

- 1 Store the downloaded and extracted files “xxx_USB_Audio.zip” on the empty USB device in Root Folder (see left figure).
- 2 Connect USB device to USB connector of the Alpine Head Unit. Please see lower left figure.

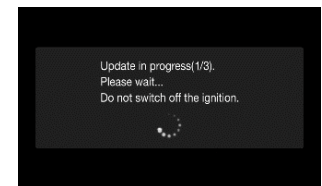
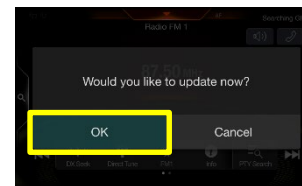


- 3 Press “OK” button when update message appears on the screen.



“Please wait” can take up to 20 seconds.

- 4 Press “OK” button again when next update message appears on the screen.



Update will be completed in around 4 minutes.
“Update in progress” steps are: “1/3 → 2/3 → 3/3”

- 5 After the first phase of the software update is complete, your Alpine Head Unit will restart automatically. The USB device **remains** in the Alpine Head Unit.

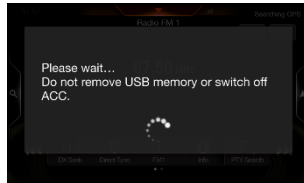
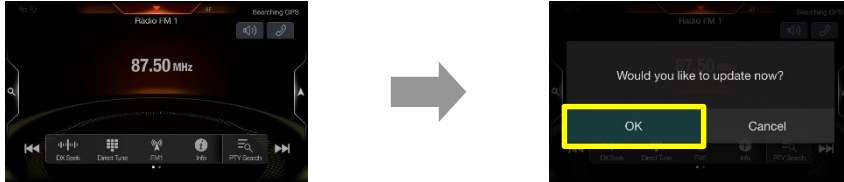


INE-F904D / INE-F904DC Series software update procedure



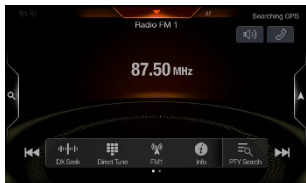
Install update software (phase 2)

- 6 Then the second phase of the software update takes place. Press **“OK”** button when update message appears on the screen. The process will now install the new navigation application data to your Alpine Head Unit.



Update will be completed in around 3 minutes.

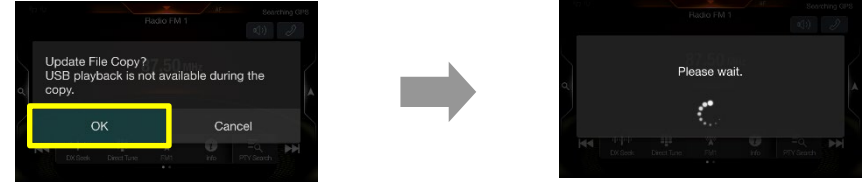
- 7 The navigation application is loaded successfully when your Alpine Head Unit restarts automatically. The USB device **remains** in the Alpine Head Unit.



→ Go to no. 8.

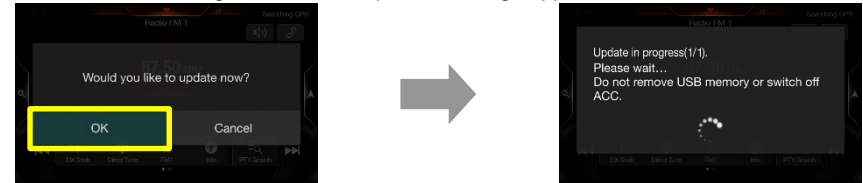
Install update software (phase 3)

- 8 Then the third phase of the software update takes place. Press **“OK”** button when update message appears on the screen. The process will now install the BU-com audio update (last part) to your Alpine Head Unit.



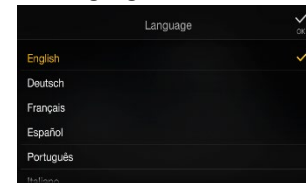
“Please wait” can take up to 20 seconds.

- 9 Press **“OK”** button again when next update message appears on the screen.



Update will be completed in around 3 minutes.

- 10 When the BU-com audio update is finished, the Alpine Head Unit will reboot automatically in **“Language”** select screen.



- 11 **Remove** the USB device from Alpine Head Unit.

- 12 Select your language and press **“OK”**.

- 13 Check firmware version in Setup: → General → About → **Firmware Version** If **“Firmware Version”** number displayed as:

INE-F904DC, INE-F904DU, INE-F904S907, INE-F904TRA:
“1.3021.1.3021.1.3021”

INE-F904D, INE-F904T6:
“1.3020.1.3020.1.3020”

in **SETUP** menu of the Alpine Head Unit, this update procedure has been successful.

